

“ Proudly Built in Australia for Australian Conditions ”

Challenge

Camper Trailers Pty Ltd

- Camper Trailers - Off/On Road – Manufacture, Sales & Hire
- Trailer Manufacture – All Styles – Custom Builds our specialty
- Tent Manufacture - Awnings - Made to Measure



Head Office (Factory/Showroom)-

5 Coongie Avenue,
EDWARDSTOWN SA 5039

Ph: (08) 8277 9853

Fax: (08) 8278 2526

Postal Address:

3 Ash Avenue,
Belair SA 5052

Sales - Gareth Handshin:

0412 821 221

Hire - Sandy Handshin:

0414 285 177

Email: info@challengecampertrailers.com



Challenge Camper Trailer Agents – Sales & Hire

VIC. – (Horsham) Sales Only: Michael Jenson – Jayco Horsham – 107 Stawell Road, HORSHAM VIC 3400 Ph: (03) 5382 4100

(MILDURA) Sales & Hire: Garry Davison – Austrek Adventure Centre – 689-691 Fifteenth St. VIC 3500 Ph: (03) 5023 4466

(WARRNAMBOOL) Sales Only: Neville & Murray Swayn – Warmambool Caravans – 182 Raglan Pde. VIC 3280 Ph: (03) 5561 0033

N.S.W. – Sales & Hire: Greg Kean – Challenge Camper Trailers Sydney – 8 Bridge Street, RYDALMERE NSW 2116 Ph: (02) 9638 0771

– Sales Only: Laurie Godden – Kaputar Ford Pty Ltd – Lot 5, Caroline Way, NARRABRI. NSW 2390 Ph: (02) 67921816

N.T. – (DARWIN) – Sales Only: Tony Williams – Coromal Caravans – 910 Stuart Highway, 11 MILE N.T. 0828 Ph: (08) 8932 4252

(ALICE SPRINGS) – Sales Only: Colin & Sally Butler – 279 North Stuart Highway, ALICE SPRINGS. N.T. 0870 Ph: 0889 527999

W.A. – Sales & Hire: Rick & Sue Irvine – Campers on the Run – U/5, 10 McElligott Court, CANNING VALE WA 6155 Ph: (08) 9256 3450

QLD. – Enquiries: Phone: Darren Hoger on 0419 873 431 or Email: sales@travelander.com.au

www.challengecampertrailers.com

Challenge

Camper Trailers Pty Ltd

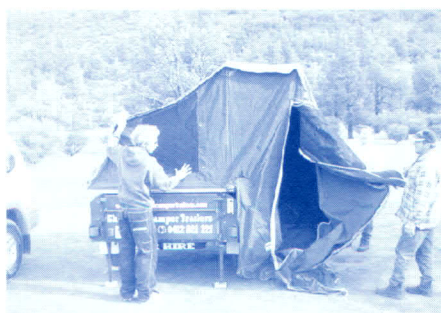
About Us!

- We are a family business, established in Adelaide in 2000. We are experienced campers ourselves so we understand your needs!
- Our quality Camper Trailers are designed, built and painted in our own factory in South Australia. They are made to withstand Australian conditions and comply with Australian Standards
- Our trailers are of heavy duty construction in a choice of steel or alloy. They are lightweight for ease of towing and fuel economy
- Our tents are manufactured on site. They come in 3 sizes and 7 canvas colours, giving you flexibility of design
- Custom Built Trailers of all types are our specialty
- We also build a range of products including Barbeque Trailers, Luggage Trailers, & Trayback Campers

Trailer Features *** Note - These are the *Standard* Features of *All* Models - For additional Features and Pricing please refer to individual product flyers**

- Heavy Duty RHS Chassis & long drawbar (fully galvanised)
- Chequer plate floor with quality made guards to suit 14" - 16" wheels
- Side Steps
- Swivel Jockey Wheel
- ***Outback** - Heavy duty 45mm square axle/60mm wide eye-to-eye 7 leaf springs rebound type - 6 Stud Hubs
- ***Highway** - Heavy duty 40mm square axle/45mm wide eye-to-eye 6 leaf springs rebound type - 5 Stud Hubs
- All metal primed with 2 top coats
- Size 7' x 4' x 20" deep
- 50mm Ball Coupling (Polyblock Coupling on all Off Road models)
- Front mounted Spare Wheel
- Rear swing gate - fully water & dust proof with Challenge Compression Camlock
- 3 x Jerry Can Holders with steel tie-down loops
- 1 x 4.5kg LPG Gas Bottle Holder (2 on Meridian)
- ***Outback/Meridian** - Three 15" X 7" Sunraysia Rims & New Tyres
- ***Highway** - Three 15" x 6" Commodore Rims & New Tyres
- Stabiliser legs (spring loaded/zinc plated)
- Weight: (Trailer Only) ***Outback** - Steel construction - approx. 490 kg
(Trailer Only) ***Outback** - Alloy construction - approx. 270 kg
(Trailer Only) ***Meridian** - approx. 550 kg
(Trailer Only) ***Highway** - approx. 410 kg
- Colours: 7 to choose from (Colour matching available at additional cost)
- Trailer fully lockable with lock provisions
- Paint hardener additive
- Full trailer lights including 7 pin round plug

Supply - Off Road Standard Trailer Only (No Tent) - from \$5,450.00 (Inc. G.S.T.)



Your camper is erected in minutes with a minimum of effort

Challenge “Designed by Campers for Campers” **Camper Trailers Pty Ltd**

Off Road – ‘Outback Deluxe’

\$18,950.00 + Delivery

All Standard Trailer and Tent Features as per Current Brochure plus...

- 10ft Tent with 12oz walls and 15oz roof
- 7ft Awning – full length (wider available)
- Annexe return at Kitchen, incl. Window, & Draught Curtain
- Full annex walls (optional extra)
- Gas Strut Lifting Bed Base
- Queensize Innerspring Mattress
- Mesh Stoneguard
- Zippered PVC Cover
- Complete Kitchen Package (Stainless Steel Stove & Removable Plastic Sink)
- Complete Standard Electrical Lighting Package
- 15" x 7" Wheels with 3 New Tyres
- Mechanical Drum Brakes as Standard
- Polyblock Override Coupling
- Matching Vehicle Coupling
- Complete Front Toolbox in Aluminium Checkerplate
- Side Access Hatch with latch and seal
- 4.5kg Gas Bottle W/POL fitting
- 3 x Jerry Can Holders
- 86litre Water Tank including lockable Filler, Pump & Stoneguard
- Marine Carpet to floor of trailer
- Vertically Mounted Front Spare Wheel
- Choice of 7 Colours of Canvas & Paint
- Spring Locking Rear Levelling Jacks
- Fire Extinguisher

Off Road - ‘Walk-In Outback Deluxe’

\$21,750.00 + Delivery

As per Outback Deluxe PLUS.....

- Walk-In bed extension for easy access to QS bed (no more climbing over the other person)
- Second (external) Access Hatch
- Fridge slide in bed extrn. (optional extra)

Off Road – ‘Meridian’

\$20,950.00 + Delivery

As per Outback Deluxe PLUS.....

- 12ft Tent as Standard
- 7ft Awning
- Mesh Awning Walls
- Fully Carpeted Trailer Interior (floor and walls)
- Extended and reinforced Drawbar
- 6 x Jerry Can Holders
- 2 x 4.5kg Gas Bottles and Holders
- 150litre water capacity (two tanks) with 2 lockable fillers and stoneguards
- Aluminium Guard Protection
- Hi-Tech Deluxe Electrical Installation c/w-
 - ♦ 100Amp/Hr Powersonic Gell Battery Monitoring System with LED display and 2 Power Point Outlets
 - ♦ Insulated wiring loom to 4 Aux power outlets, 2 Cargo Lights, 2 Tent Lights
 - ♦ In-car Charging System – 30 Amp/Hr Setup with full installation in trailer & supply only for your Tow Vehicle
 - ♦ 240v Power Inlet mounted on Toolbox
 - ♦ Automatic Circuit Breakers

E.&O.E.
Prices effective from 19th Feb 2010

Challenge *"Designed by Campers for Campers"*

Camper Trailers Pty Ltd

Off Road – 'Cape York Extreme'

\$28,950.00 + Delivery

All features as per 'Meridian' & 'Walk-In Deluxe' plus...

- Aluminium Body Construction
- 10ft Tent Standard
- 7ft Awning – full length
- Full Length One Piece Galvanised Drawbar Chassis
- Electric Brakes
- Front Mudflaps
- Dual battery System – Sealed Deep Cycle
- LED Volt Display
- 12-240v Inverter
- 15A Battery Charger
- Locking Fridge Slide
- 50mm Lift Kit
- Pillow Top Innerspring Mattress
- 2nd Awning to tent on Fridge Side
- 2 x 4.5kg Gas Bottles
- Rear Swing Away Spare Wheel Holder
- Tropical Roof to Tent
- Double drawers to Walk-In area
- Slide out Stainless Steel Kitchen
- Slide out Drawer systems next to Kitchen
- Options
 - ♦ 2nd front toolbox with light - \$995.00
 - ♦ Hot water shower system - \$975.00
 - ♦ Engel 1kva Generator - \$1,155.00
 - ♦ Engel MT35 Fridge/Freezer - \$1,075.00
 - ♦ Porta Potti - \$185.00

NEW PRODUCT

Deluxe - 'Dual Cab Trayback' camper

\$15,950.00 + Delivery

Features:

- 1800 x 1800 x 900mm High
- Aluminium Checkerplate Construction
- Pressurised Water System w/- 70 litre tank
- Battery System w/- Charger, Voltmeter & Circuit Breakers
- Fridge Slide for 32l/40l Engel Fridge
- Kitchen w/- Lido Junior S/Steel Stove & Grill
- Storage Bins
- Fire Extinguisher
- Marine Carpet to Floor
- Walk In Rear Access
- 5 x Fluro lights
- 9ft Tent with Walls and Floor
- Queensize Innerspring Mattress

Options

- Single Cab Box Adaptor – Features 2 x Fluros & Carpet – Clip On - \$1,950.00 extra
- 32/40l Engel fridge from \$1,075.00
- Hot Water System – 950.00 extra

E.&O.E.

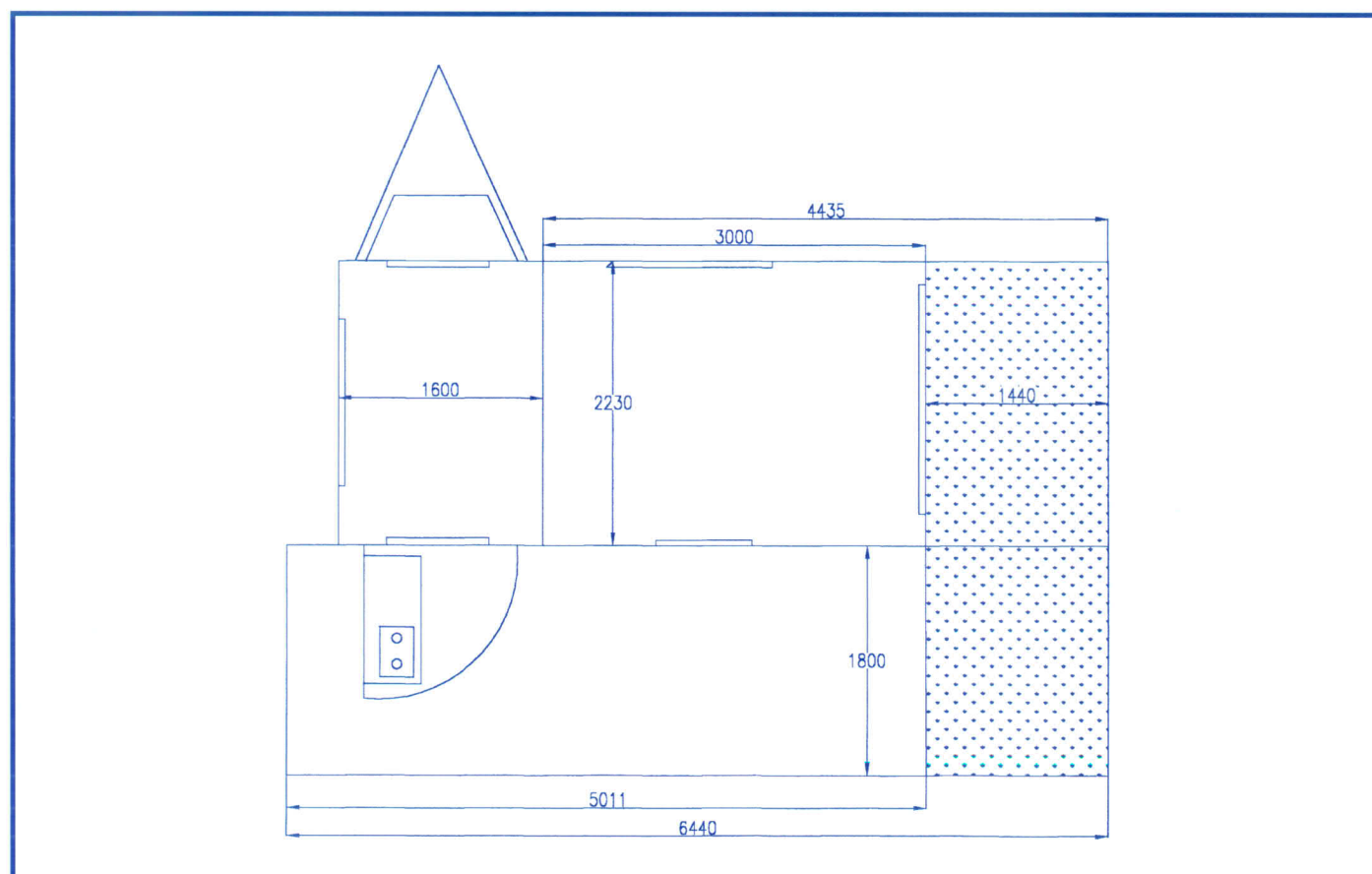
Prices effective from 19th Feb 2010

Tent Features (Standard on All Models) Note* Other Tent & Awning Sizes listed overleaf

- 10ft Tent off Side of Trailer ('Outback' & 'Highway') 12 ft. Tent off Side of Trailer ('Meridian')
- "Off the Back" and reverse side Tents available on request. (P.O.A.)
- "Wax Converters" Dynaproofed canvas (11oz. Walls / 15 oz. Roof)
- All tents have steel framework with bows held in position with reinforced pockets and retainers
- 3 Internal opening windows at bed level with 'Tentex' screens
- 1 External opening window in end tent wall cut to tent floor level with 'Tentex' screens (external flaps can be used as awnings)
- 2 x Zippered canvas doors on opposite side walls of tent with zippered 'Tentex' screens
- Reinforced 4" High PVC welded floor
- Queen sized bed on steel bed base including new 6" high density covered foam mattress (Innerspring mattress on Outback Deluxe/Walk-In/Meridian) – hatches under bed to gain access to trailer storage
- Step provided to access bed
- Zippered Security Pocket for personal items
- All poles, pegs & guy ropes supplied in separate bag
- Tent Area 2.2m x 2.7m plus area housing Queen sized Bed
- Bed Base & Tent detachable from trailer if required
- Choice of 7 Canvas Colours

Supply – 10 ft. Tent on Bed Base – Price from \$5,450.00 (Inc. G.S.T.)

Floor Plan of Trailer/Tent/Annexe



Note* All prices listed are correct at time of printing and include G.S.T. Prices subject to change without notice.

Trailer Options: (supplied on request at additional cost)

• Alloy Trailer / Galv. Chassis – additional	\$2,200.00
• Walk-In Bed Extension	\$1,800.00
• Polyblock Trailer Coupling	\$255.00
• Polyblock Vehicle Coupling	\$ 75.00
• Hydraulic Override Brakes	\$695.00
• Mechanical Drum Brakes	\$725.00
• Mechanical Disc Brakes	\$895.00
• Electric Brakes	\$795.00
• Electric Handbrake Assembly	\$155.00
• Electric Brake Controller - from	\$195.00
• Trailer wired for in-car charging	\$ 75.00
• Trailer wired with 50amp Anderson Plug	\$ 95.00
• Fully Galvanised Drawbar	\$275.00
• Toolbox – Front (Steel) inc. seals/latches	\$625.00
• Toolbox – Front (Alloy C/Plate) inc. seals/latches	\$825.00
• Vertically Mounted front spare wheel/Bracket & Stand	\$125.00
• 86 Litre Water Tank under rear of body incl. stoneguard, filler, pump & all plumbing	\$525.00
• Second 64 Litre Water Tank under body with stoneguard and all plumbing	\$495.00
• Side access hatch R.H.F. (access inside tent) seal and latch included	\$295.00
• Second side access hatch L.H.F. (access from outside tent) as above	\$295.00
• Gas Strutted Lifting Bed Base	\$490.00
• Increased provision for up to 7 jerry cans	\$795.00
• Extended Reinforced D/Bar 300mm	\$385.00
• 'Alko' Independent Suspension	\$975.00
• Provision for Bike Rack (Rear) (30kg cap.)	\$115.00
• 80 Amp/Hr Dry Cell Battery add.	\$185.00
• 100 Amp/Hr Dry Cell Battery add.	\$275.00
• 120 Amp/Hr Dry Cell Battery add.	\$295.00
• L.P.G. Gas Bottle 4.5kg (POL Fitting)	\$ 57.00
• L.P.G. Gas Bottle Holder on R.H.R. plate	\$ 65.00
• Underbody Rubber Protection	\$275.00
• Jerry Can Protection (each)	\$ 35.00
• 'Rhino' Rubber Protection Guards/Wings	\$495.00
• Aluminium Checkerplate Guards/Wings	\$165.00
• 16" Wheel Rims (each) from	\$105.00
• 17" Wheel Rims (Alloys & Steel Avail.)	P.O.A.
• New Tyres – full range 14" – 17" (ea) from	\$120.00
• Boat Rack (Standard Tradesman)	\$695.00
• Boat Rack (Deluxe Gas Strut - 180°)	\$1,795.00
• Outboard Motor Bracket (spare wheel area)	\$175.00
• Stoneguard (Heavy Duty Truck Mesh)	\$215.00
• Marine Carpet to floor of trailer	\$145.00
• Marine Carpet to walls of trailer	\$255.00
• Zinc annealed body	\$875.00
• Galvanised main frame chassis	\$875.00
• Spare Spring Set (mounted)	\$285.00
• Automotive Two Pack Urethane Paint	\$975.00
• Drawer System to RHF Access Hatch	\$440.00
• Spare Wheel Hub Mounted on Spare Wheel	\$145.00
• Rear Mounted Spare Wheel – Swing Away	\$875.00
• Spare Wheel Mounted Underside Rear Trailer (Relocate 86L Water Tank to front underside)	\$295.00
• Shock Absorbers mounted to beam axle & Leaf springs	\$295.00
• Pneumatic Jockey Wheel 8" from	\$115.00

Canvas Options (Available on all Challenge Tents)

• Zippered Vinyl Storm Cover	\$470.00
• 6 ft. Awning Roof Only (10ft tent) from	\$495.00
• 7 ft Awning Roof Only (10 ft. tent) from	\$595.00
• 8 ft Awning Roof Only (10 ft. tent) from	\$695.00

• To Upgrade from 10 ft. Tent to 12 ft. – add	\$650.00
• To Upgrade from 10 ft. Tent to 14' 6" – add	\$1,050.00
1) Annexe Wall to apex return around kitchen with window and draught curtain (10 ft.) from	\$895.00
2) Single Canvas Side Wall to Awning from	\$190.00
3) Mesh Walls Apex to end Awning (10 ft.) from	\$770.00
4) Canvas Walls Apex to end Awning (10 ft. tent) Incl. 2 windows from	\$1,090.00
5) Complete Annexe Walls (10 ft. tent) in canvas incl. 4 windows	\$1,899.00
6) Annexe Walls/Screens – Full or Partial custom made to your requirements	P.O.A.
7) Marine Washable Carpet to floor of tent and/or annexe from	\$145.00
8) Second Queen Sized Innerspring Mattress (sits on top of mattress in trailer)	\$295.00
9) Additional PVC Overlays for main tent windows from (each)	\$135.00
10) 4 x poles/guy ropes/pegs for awning windows	\$125.00

Base Model Kitchen Package (Standard Packages)

*Features as listed on Outback & Highway Standard Packages

Price Includes full Installation **\$595.00**

Standard Kitchen Package (Hire/Highway Deluxe Packages)

Powder-coated steel kitchen attached to tailgate

- 2 Burner Steel Gas Stove
- Plastic Wash Basin with Hand Water Pump
- Fold-down preparation tray
- Utensil Tray
- Windguard & covers used as preparation areas
- Marine Carpet to floor of kitchen storage area
- 4.5kg Gas Bottle / Fire Extinguisher
- Twin Gas Regulators
- Complete Gas Lines with quick-connect coupling
- 2nd Hand Water Pump - external

Price Includes full Installation **\$1,775.00**

Deluxe Kitchen Package (Outback Deluxe/Walk In/ Meridian)

*Features as listed for Standard Kitchen with the following upgrades:-

- "Lido Junior" Stainless Steel 2 burner Stove with Griller
- Stainless Steel Sink/or 2 Plastic Removeable (choice)
- Stainless Steel Braided Pigtail

Price Includes full Installation **\$2,225.00**

Standard Electrical Lighting Package (Deluxe Packages)

- N70ZZ Heavy Duty 90 Amp/Hr Battery w/- terminals
- Marine Battery Box (plastic)
- Trailer fully wired with 2 x 12 volt outlet sockets
- Internal light to cargo bay of trailer
- Tent Light – Fluro with 3m cable
- Outside Light to kitchen – Fluro with mounting clips
- Fuse Box (4 terminal)
- Voltmeter (to show Battery Charge Status)
- Trailer Plug wired for in-transit trailer battery charging
- Battery Charger 240v-12v for charging main battery w/ L.E.D. Display
- All wiring fully insulated

Price includes Full Installation **\$1,640.00**

Hi-Tech Electrical Lighting Package (Meridian Package)

*See Features as listed for Meridian Package

Price includes full Installation **\$2,840.00**

20th February 2009